

Dynamic Characteristics

Parameter	Symbol	Min.	Typ.	Max.	Unit	Test condition
Input capacitance	C_{iss}		587.1		pF	$V_{GS}=0\text{ V}$, $V_{DS}=50\text{ V}$, 1 MHz
Output capacitance	C_{oss}		40.1		pF	
Reverse transfer capacitance	C_{rss}		1.4		pF	
Turn-on delay time	$t_{d(on)}$		30.3		ns	$V_{GS}=10\text{ V}$, $V_{DS}=400\text{ V}$, $R_G=2\ \Omega$, $I_D=4\text{ A}$
Rise time	t_r		16.4		ns	
Turn-off delay time	$t_{d(off)}$					

Electrical Characteristics Diagrams

<p>Figure 1. Typ. output characteristics</p>	<p>Figure 2. Typ. transfer characteristics</p>
<p>Figure 3. Typ. capacitances</p>	<p>Figure 4. Typ. gate charge</p>
<p>Figure 5. Drain-source breakdown voltage</p>	<p>Figure 6. Drain-source on-state resistance</p>

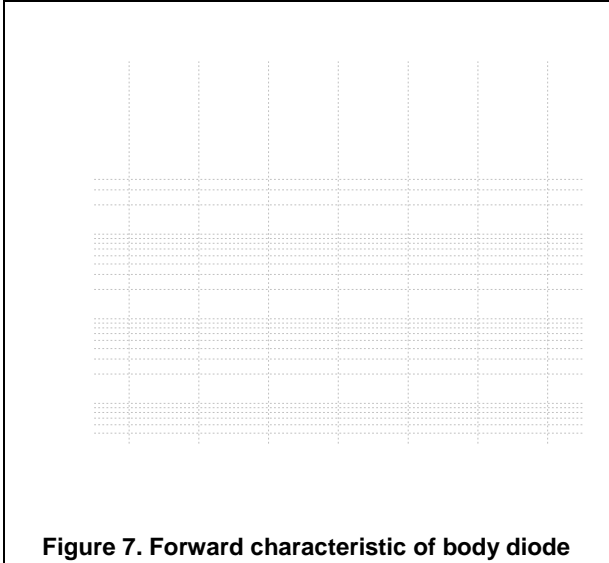


Figure 7. Forward characteristic of body diode

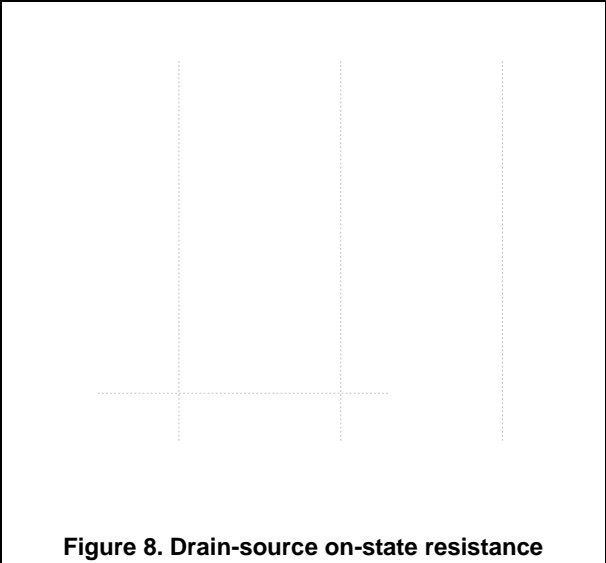


Figure 8. Drain-source on-state resistance

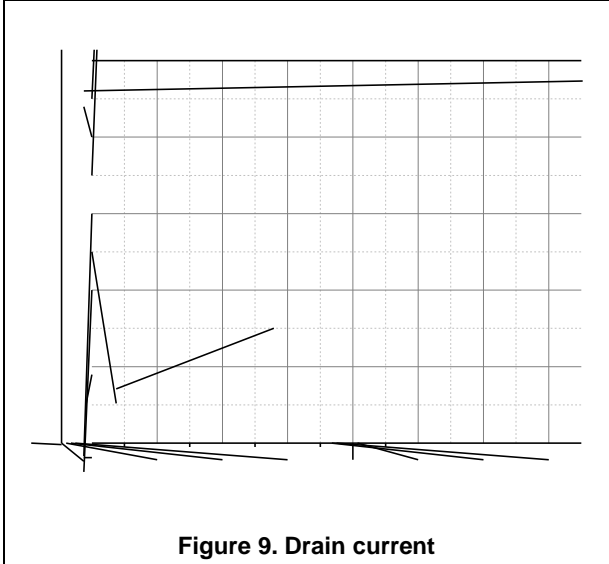


Figure 9. Drain current

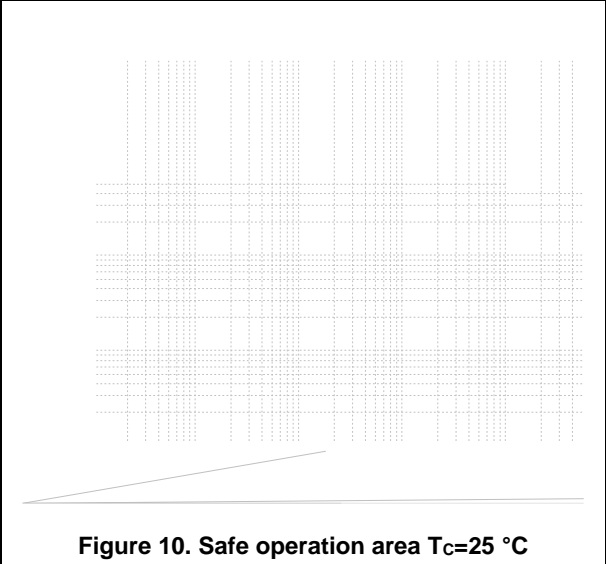


Figure 10. Safe operation area T_c=25 °C

Test circuits and waveforms

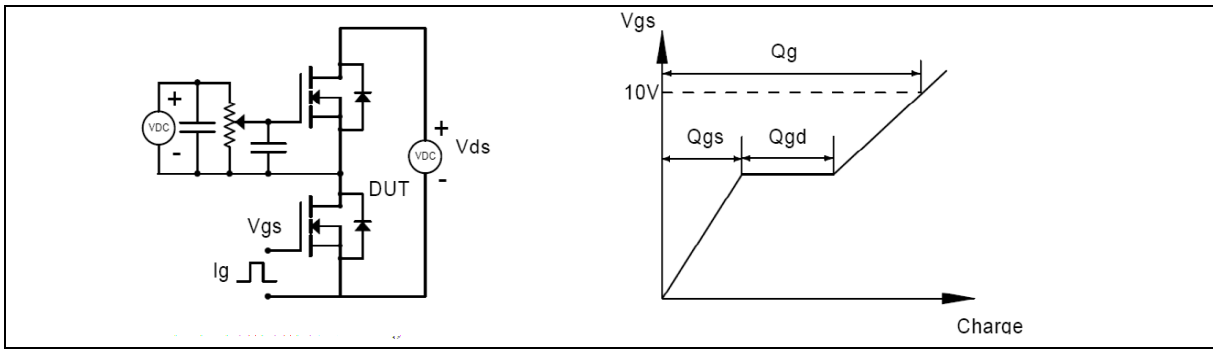


Figure 1. Gate charge test circuit & waveform



Figure 2. Switching time test circuit & waveforms

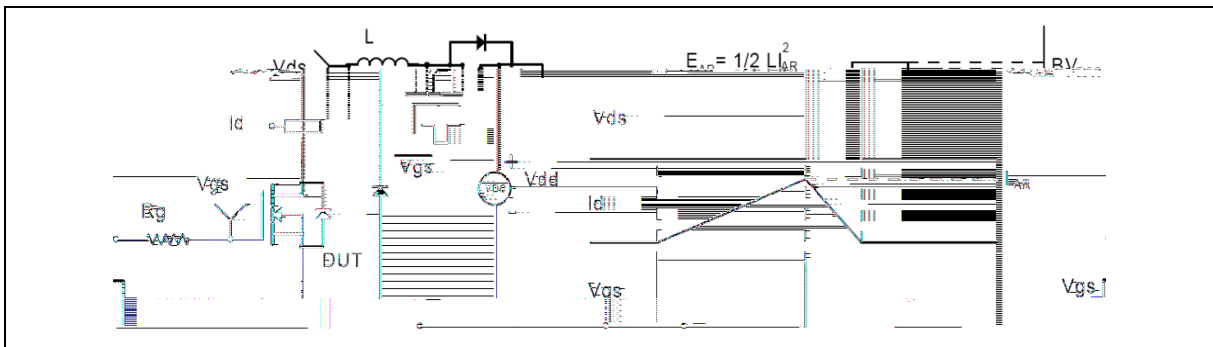
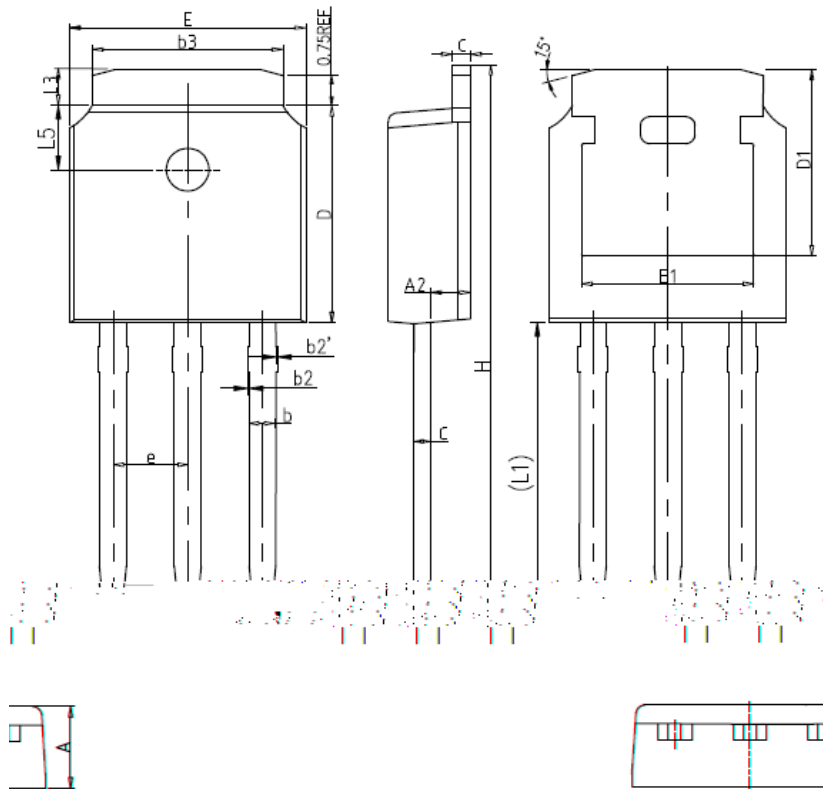


Figure 3. Unclamped inductive switching (UIS) test circuit & waveforms



Figure 4. Diode reverse recovery test circuit & waveforms

Package Information



Symbol	mm		
	Min	Nom	Max
A	2.20	2.30	2.40
A2	0.97	1.07	1.17
b	0.68	0.78	0.90
b2	0.00	0.04	0.10
b2'	0.00	0.04	0.10
b3	5.20	5.33	5.50
c	0.43	0.53	0.63
D	5.98	6.10	6.22
D1	5.30REF		
E	6.40	6.60	6.80
E1	4.63	-	-
e	2.286BSC		
H	16.22	16.52	16.82
L1	9.15	9.40	9.65
L3	0.88	1.02	1.28
L5	1.65	1.80	1.95

Version 1: TO251-C package outline dimension

Ordering Information

Package Type	Units/ Tube	Tubes/ Inner Box	Units/ Inner Box	Inner Boxes/ Carton Box	Units/ Carton Box
TO251-C	75	66	4950	6	29700

Product Information

Product	Package	Pb Free	RoHS	Halogen Free
OSG70R600AF	TO251	yes	yes	yes

V@Áþ ±|{ æþ } Á æþ) Áþ Á@ Áá[& { ^} ó @þ|Áþ Á [Áç^} ó^Á^* æá^áÁæ Áæ^ ææ ç^Á Á & } áæþ } • Á|Áæææç^á ææ ÈÝ æ@Á^] ^&óþ Áæ ^ Áçæ] |• Á|Áç } • Áæþ) Á@|Áá Èæ ^ Áç } ææÁ çæþ ^• Áææ^á@|Áá Áæ áþ|Áæ ^ Áþ ±|{ æþ } Á^* æááá * Á@Áæ] |ææþ } Á Á@ÁçæÈÈÁá) çæÁ Ú^ { æþ } á ~ &ç |Á@|Á^ Áá &æþ } Áæ ^ Áæ áÁæ|Á æ|ææ çá • Áæ áÁæáááá • Á Áæ ^ Áá áÈæ &þ áá * Á , æ@ ~ óá ææþ } Èæ æ|ææ çá • Á Á [] Èæ ±á * ^ { ^} ó Á Á ç |Á^&ç æþ | [] |Áç Áá @ Á Áæ ^ Á@áÁ] æçÈ

ç |Á^ |ó@|Áþ ±|{ æþ } Á } Áç &@ [[* ^ Èá^|æþ^ Áç | { • Áæ áÁæ } áæþ } • Áæ áÁ |æ^ Èæ |Áæ^Á & } çæó@Áá) çæÁÚ^ { æþ } á ~ &ç |Áæþ • Á^] |Á^• çæþ^• Áç ÈÈÁá) çæ^ { æþ } ÈÈ

