

PD080065EP / PD080065EP_G

650V Silicon Carbide Diode

Features

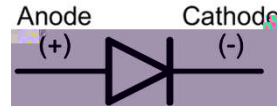
: OB=c - - -
 : : - - -
 : :S - - -
 : a :V - - - -O - -
 : R -S - - -
 :] -a -P - -cS-
 : -P

Package Outline



Applications

: -Z -] -
 :] -S -P
 : Z -Q
 : Q-Y



Absolute Maximum Ratings

Symbol	Parameter	Value	Units
c__z	-] -_ -c	OB=	c
c_z] -_ c -	OB=	c
c_QP	QP O -c	OB=	c
V _σ	P S -P - a _p - a _p -	D= =	N
V _z	-] -S -P - a _p -	C=	N
V _z	[:_ -S - -P - a _p - a _p -	B= =	N
]α] -Q - a _p -	=	d
a _{vea}	-W - -a	:BB- -8 DB	

Electrical Characteristics

a_p J- B P- - -

Symbol	Parameter	Test Conditions	Min	Typ	Max	Units
c _s	S -c	V _J = N9 _{aP} J- B P V _J = N9 _{aP} J- DB P	::	B =	E A	c
V ₋	- P	c ₋ J-CB=c-a _p J- B P c ₋ J-CB=c-a _p J- DB P	::	A= E=	F= F==	N
p	a -P P	c ₋ J-A=c	::	BE	::	P
P	a P	c ₋ J- c 9 _{aW} J- B P9-J- Z c ₋ J-B =c 9 _{aW} J- B P9-J- Z	::	ADB A=	::	S

Thermal Characteristics

a_p J- B P- - -

Symbol	Parameter	Min	Typ	Max	Units
- _{VP}	a - 9W : :P	::	= CB	= E=	d

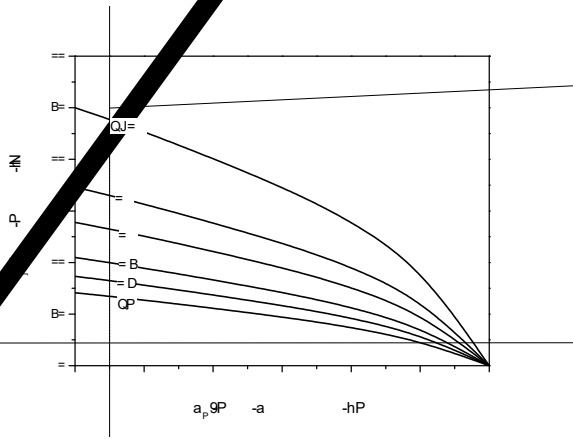
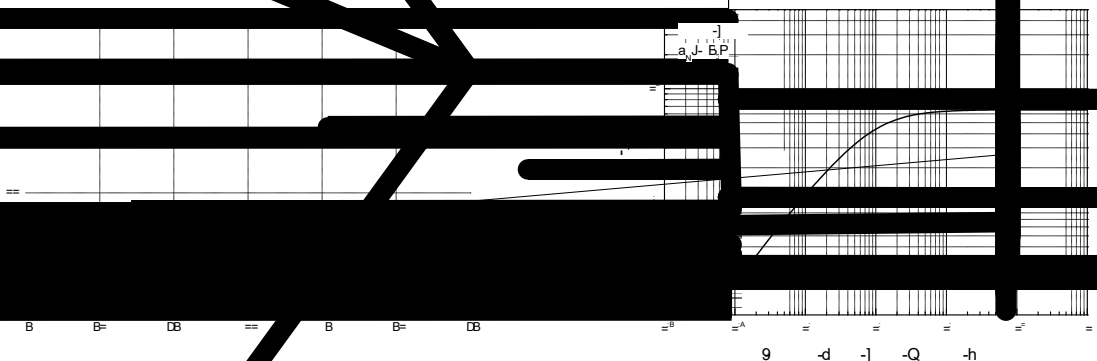
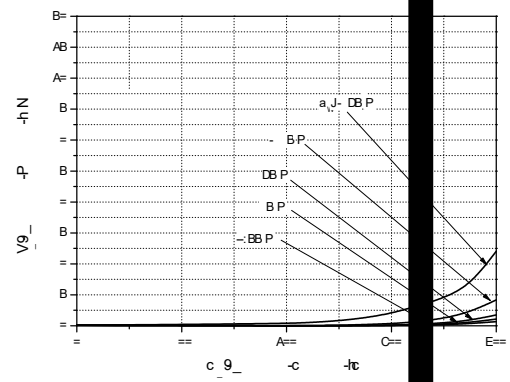
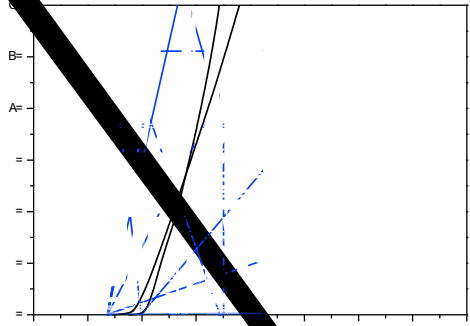
Package Marking and Ordering Information

Device Marking	Device	Package	Reel Size	Tape Width	Quantity
] Q= ==CBR]] Q= ==CBR]	a : =	:	:	B=
] Q= ==CBR] T] Q= ==CBR] T	a : =	:	:	B=

7] Q= ==CBR] T-G₋ -P

] Q= ==CBR] -] Q= ==CBR] T

Typical Characteristics



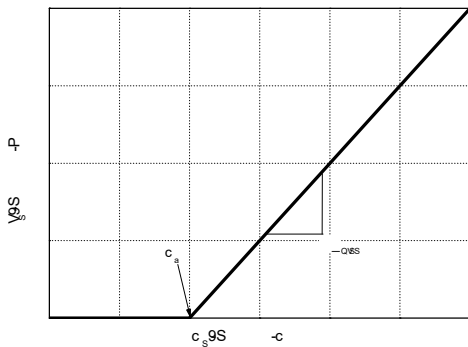
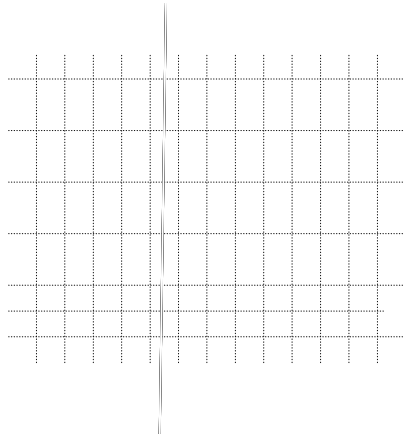
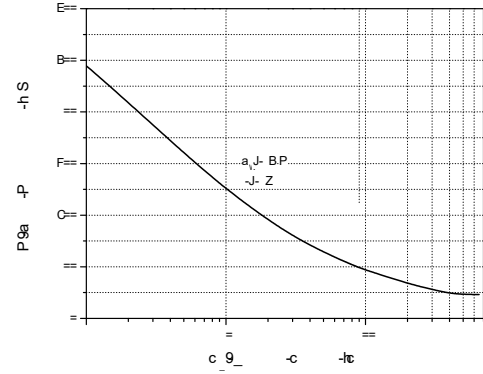
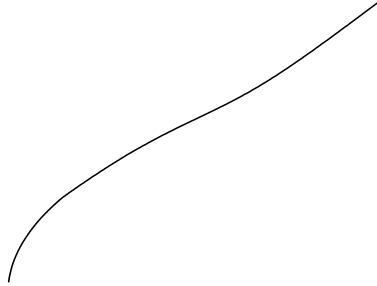
] Q = ==OBR] - -] Q = ==OBR] T

N: HEDL: I: CM d AY

e e Xd

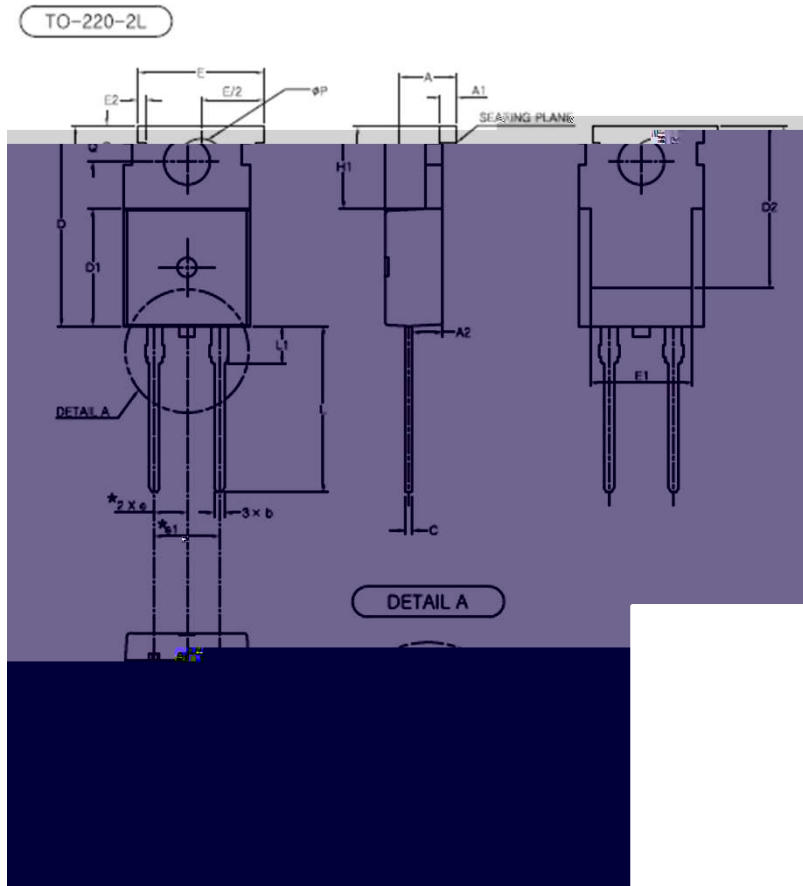
k e ' .

Typical Characteristics



Q = OBR] - -] Q = OBR] T

Package Information



SYMBOL	MIN	NOM	MAX
A	4.30	4.50	4.70
A1	1.25	1.30	1.40
A2	2.20	2.40	2.60
b	0.70	0.80	0.90
b1	1.42	1.52	1.62
b2	1.17	1.27	1.37
c	0.45	0.50	0.60
D	15.50	15.70	15.90
D1	9.00	9.20	9.40
D2	(12.70)		
E	9.70	9.90	10.10
E1	(8.00)		
E2	(0.60)		
E3	9.70	9.90	10.10
e	2.54 BSC		
e1	5.08 BSC		
H1	6.30	6.50	6.70
L	12.88	13.08	13.28
L1	(3.00)		
L2	-	-	0.80
φP	3.50	3.60	3.70
Q	2.70	2.80	2.90

NOTE

1. THESE DIMENSIONS DO NOT INCLUDE PROTRUSIONS OF THE MOLD
2. THE 'L1' MARK IS THE REFERENCE
3. THE 'L2' SYMBOL IS A PROTRUSION OF THE MOLD
4. IT HAVE TO APPLY 'TO-220-3L MOLD DIE'

N HEDL: I: CM d AY

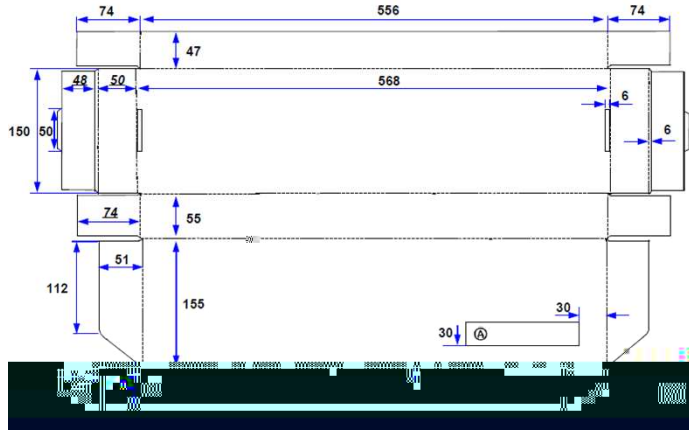
e e Xd


k e ' .

] Q = ==OBR] --] Q = ==OBR] T

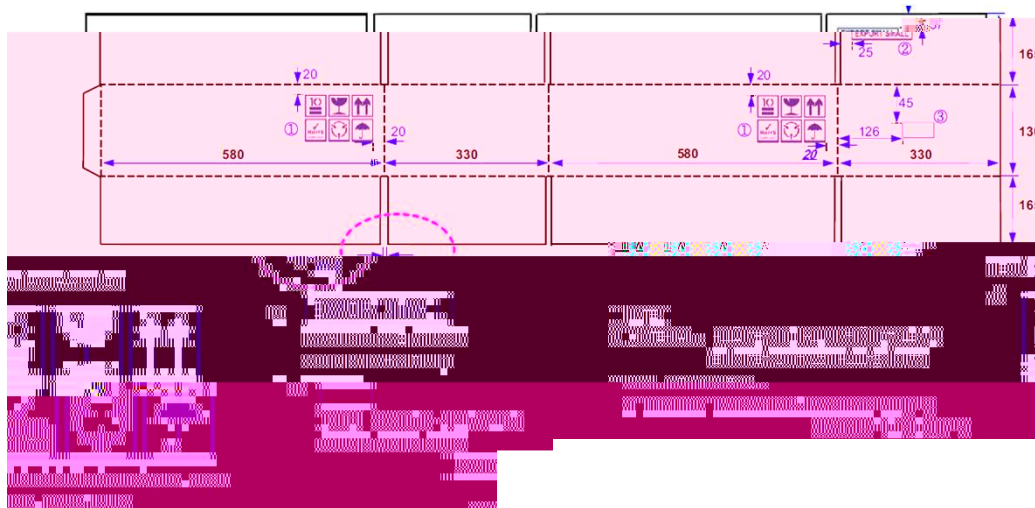
Packing Information


Inner Box



PART ID	PKG Type
PDXXXXXXEX_G	XX-XXXX-XX
LOT No.	QTY
XXXXXXXXXXXXXX	X,XXX ea
	
DATE : XXXX.XX.XX	

Outer Box



PART ID : PDXXXXXXEX_G	
LOT NO : XXXXXXXXXXXX	
QTY : XX,XXXX ea	
	
DATE : XXXX.XX.XX	

] Q= ==OBR] --] Q= ==OBR] T

Notes

N
 O O - - - -] 9 - - - - -
 P V- - - - - 9 - - - - -
 Q f R -] d R_aRP [∅ - - - - - f R -] d R_aRP [∅
 R a - - - - - - - - - -]
 S f R -] d R_aRP [∅ - - - - 9 - - - - 9 - - - -
 T f R -] d R_aRP [∅ - - - - - - - - -
] - - - -] - - - - - - - - -
 V f R -] d R_aRP [∅ - - - - - - - - -
 W a - 9 - - - - 9 - - - - - - - - -
 - - f R -] d R_aRP [∅

] Q = ==OBR] --] Q = ==OBR] T

