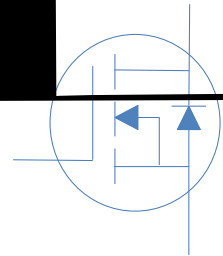
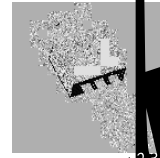


&\$J 'B!7 K 'Dck Y

$V_{DS}$	
$R_{\theta JC}$	HC!&*
$R_{\theta JA}$	HC!&(
$R_{\theta JB}$	HC!&&
$I_{B}$	$I_{B}$



DUFhBi a VYf	DUW_U[ Y	A Uf_]b[
< ; 6%/%\$B &\$G	HC!&*'	; 6%/%\$B &\$G
< ; ? %/%\$B &\$G	HC!&( +	; ? %/%\$B &\$G
< ; D%/%\$B &\$G	HC!&&\$	; D%/%\$B &\$G

### Absolute Maximum Ratings at $T_1$ & ) 'fi b'Ygg'cH'Yfk ]gY'gdYVWZYXk

DUFUa YHYf	Symbol	7 cbX]hcbg	Value	Unit
7 cb]bi ci g'8fU]b'7i ffYbh 'fG] ]Vzb'@ja ]YXk	$I_D$	$T_1$ & ) $T_1$ %&\$	% & -	A
8 fU]b'hc'Gci fW'J c'fU[ Y	$V_{DS}$	!	&\$&	V
; UHY'hc'Gci fW'J c'fU[ Y	$V_{GS}$	!	$\pm$ &\$	V
Di `gYX'8fU]b'7i ffYbh	$I_{DM}$	!	' +&\$	A
5j U'UbVWY'9bYf[ n'z'G]b[ 'Y'Di `gY	$g_{AS}$	@1 \$(a < z'H_7 1&)	+&\$	a >
Dck Yf'8]gg]dU]cb	$P_D$	$T_1$ & )	(&-	K
CdYfU]b[ 'UbX'GhcFU[ YHYa dYfU]h fY	$T_{stg}$	!	!) ) 'hc%+	

### Absolute Maximum Ratings

DUFUa YHYf	Symbol	Max	Unit
H\Yfa U'F Yg]g]UbW'>i bV]cb!7 UgY	$R_{>7}$	\$" )	#
H\Yfa U'F Yg]g]UbW'>i bV]cb!5a V]Ybh	$R_{>5}$	* \$	#



9 YVWfW7 \ UfUWVfghVg UhiH,1&) 'fl b Ygg'ch Yfk JgY'gdYVWZYXt

GhUjW7 \ UfUWVfghVg

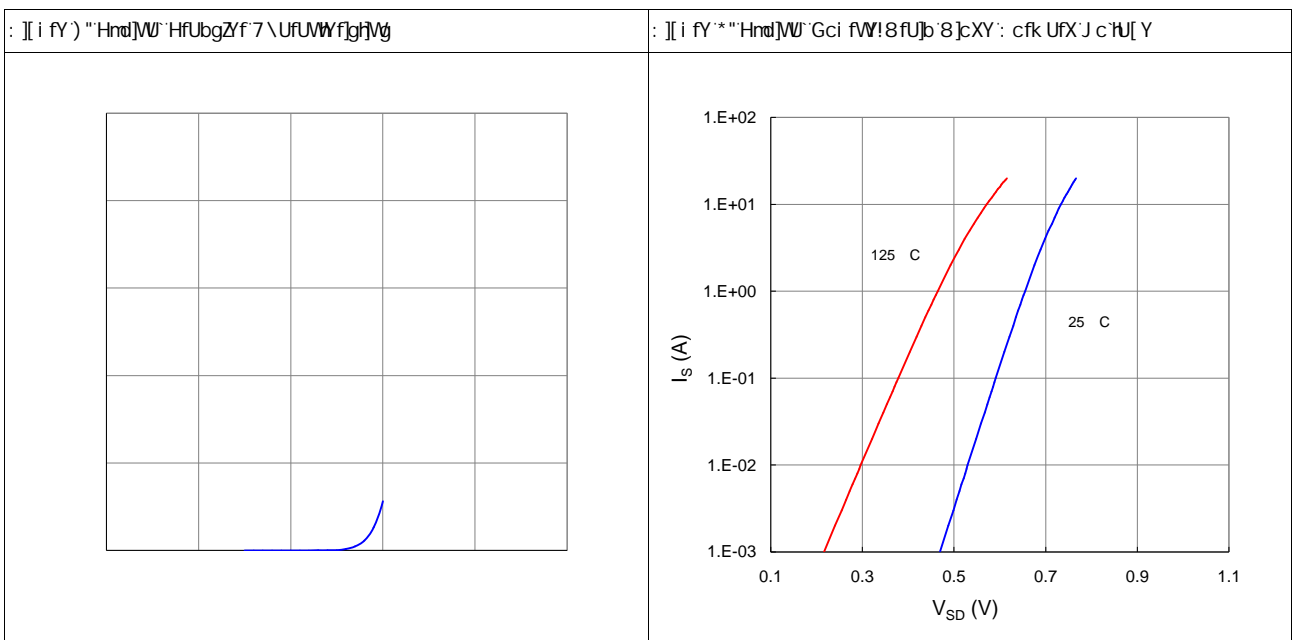
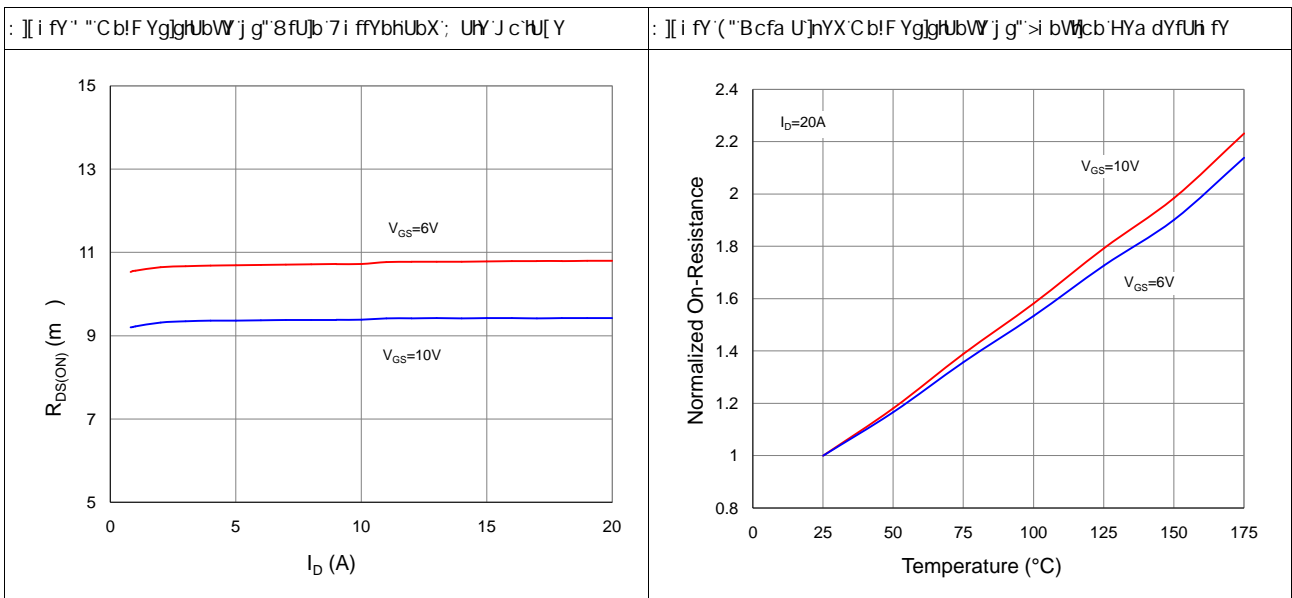
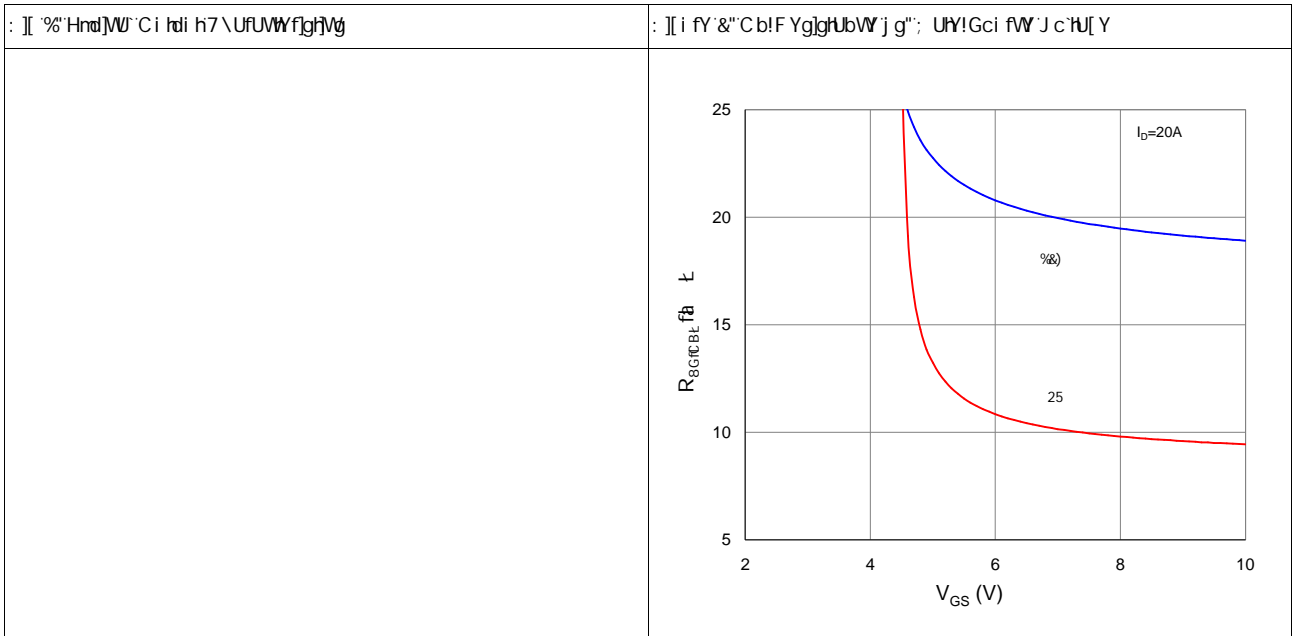
DUfUa YHf	Symbol	7 cbXjHcbg	Value			Unit	
			min	mid	max		
8fUj b'hc'Gci fW'6fYU_Xck b'J c'UJ[ Y	V <sub>fBf tBGG</sub>	V <sub>GS1</sub> J Ž <sub>1</sub> &\$ A	&\$	!	!	V	
; UY' H\ fYg\ c'X'J c'UJ[ Y	V <sub>GfMt</sub>	V <sub>GS</sub> =V <sub>DS</sub> , I <sub>D</sub> 1&\$ A	2	'	(		
NYfc'; UY'J c'UJ[ Y'8fUj b'7i ffYbh	I <sub>DSS</sub>	V <sub>GS1</sub> J Ž <sub>DS1</sub> % Ž <sub>H,1</sub> &)	!	!	%	A	
		V <sub>GS1</sub> J Ž <sub>DS1</sub> % Ž <sub>H,1</sub> %\$	!	!	%\$		
; UY'hc'Gci fW'@YU_U[ Y'7i ffYbh	I <sub>GSS</sub>	V <sub>GS1</sub> t&\$ Ž <sub>DS1</sub> J	!	!	±%\$	nA	
8fUj b'hc'Gci fW'cb'F YgJgUbw	R <sub>8GfBt</sub>	V <sub>GS1</sub> % Ž <sub>1</sub> &\$5	HC!&*''	!	- "%	%"+	m
			HC!&( +	!	, "+	%"-	
			HC!&&\$	!	- "(	%%	
HfUbgVt bXi VUbw	g <sub>Z</sub>	V <sub>DS</sub> =5V, I <sub>D</sub> 1&\$5	!	+\$	!	S	
; UY'F YgJgUbw	R <sub>G</sub>	V <sub>GS1</sub> J Ž <sub>DS</sub> CdYbžZi%A <n	!	(" \$	!		

8nbUa jW7 \ UfUWVfghVg

hdi h7 UdUWVfghVg	7 <sub>iss</sub>		!	(- +\$	!	d:
Ci hdi h7 UdUWVfghVg	7 <sub>oss</sub>	V <sub>GS1</sub> J Ž <sub>DS1</sub> % Ž <sub>Zi</sub> %A <n	!	(&\$	!	
F Yj YfgY' HfUbgZf'7 UdUWVfghVg	7 <sub>fgg</sub>		!	+)"	!	
HcU'; UY'7 \ Uf[ Y	Q <sub>g</sub>		!	56	!	b7
; UY'hc'Gci fW'7 \ Uf[ Y	Q <sub>gs</sub>	V <sub>DD1</sub> %\$ Ž <sub>1</sub> &\$5 Ž <sub>GS1</sub> %J	!	%	!	
; UY'hc'8fUj b'fA ]'Yf'7 \ Uf[ Y	Q <sub>LX</sub>		!	5	!	
Hi fb'cb'8Y'UmH]a Y	t <sub>XfBt</sub>		!	%*	!	ns
Rise time	t <sub>f</sub>	V <sub>DD1</sub> %\$ Ž <sub>1</sub> &\$5 Ž <sub>GS1</sub> %J ž	!	22	!	
Hi fb'cZ8Y'UmH]a Y	t <sub>XfZt</sub>	R <sub>G1</sub> %\$ ,	!	' ,	!	
: U' H]a Y	t <sub>Z</sub>		!	%\$	!	

F Yj YfgY'8]cXY'7 \ UfUWVfghVg

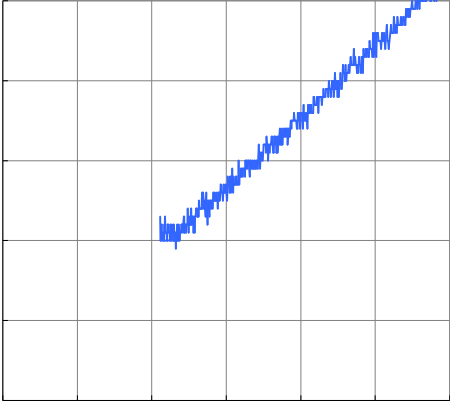
8]cXY': cfk Uf'J c'UJ[ Y	V <sub>SD</sub>	V <sub>GS1</sub> J Ž <sub>1</sub> &\$5	!	\$"-	!	V
F Yj YfgY'F YVtj YfmH]a Y	t <sub>ff</sub>	V <sub>R1</sub> %\$ Ž <sub>1</sub> &\$5 Ž <sub>X=#H1</sub> %\$5# s	!	%( \$	!	ns
F Yj YfgY'F YVtj Yfm7 \ Uf[ Y	Q <sub>ff</sub>		!	*' \$	!	b7





<; 6%\$B &\$G , <; ? %\$B &\$G  
<; D%\$B &\$G

D!(

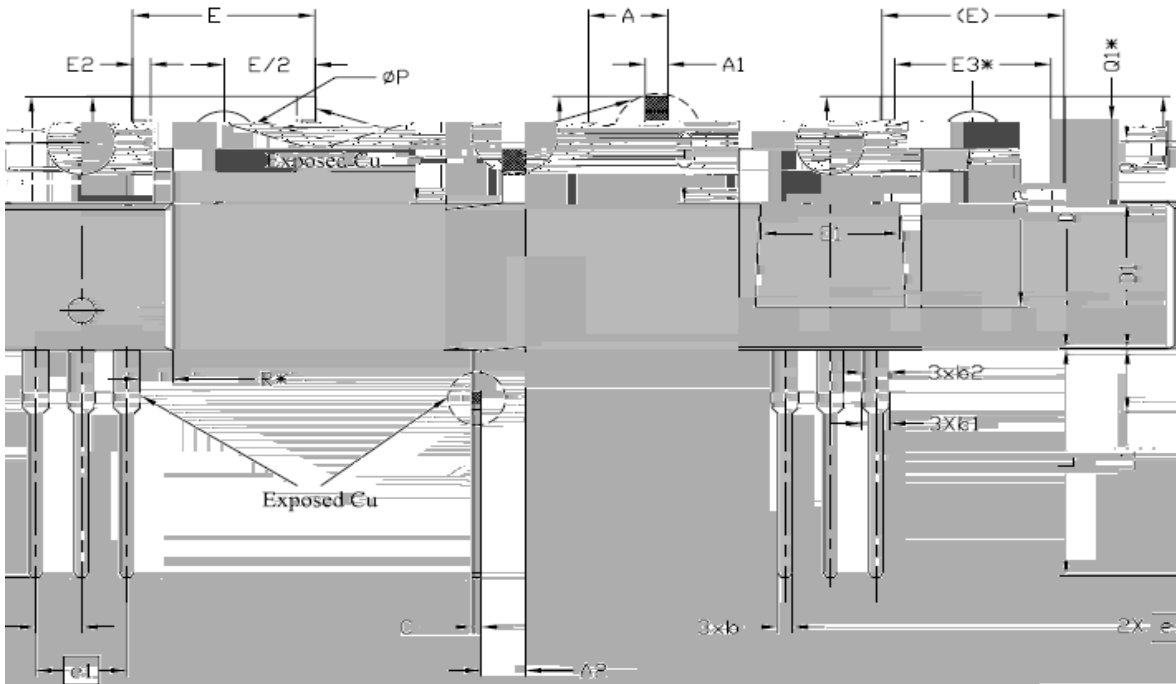
: ][ i fY '+' Hnd]W"; UY!7\Uf[Y] g"; UY!hc!Gci fW'J c'U[Y	: ][ i fY, "Hnd]W"7 UdUW]ubW'j g"8 fU]b!hc!Gci fW'J c'U[Y
	

: ][ i fY - "A UI ]a i a 'GUZ' C dYfU]b[ '5fYU	: ][ i fY %\$ "A UI ]a i b'8 fU]b'7 i ffYbhj g"7 UgY'HYa dYfU]h fY

: ][ i fY %%"Bcfa U]nYX'A UI ]a i a 'HfUbg]Ybh\Yfa U' a dYXUbW'z>i bW]cb!hc!7 UgY

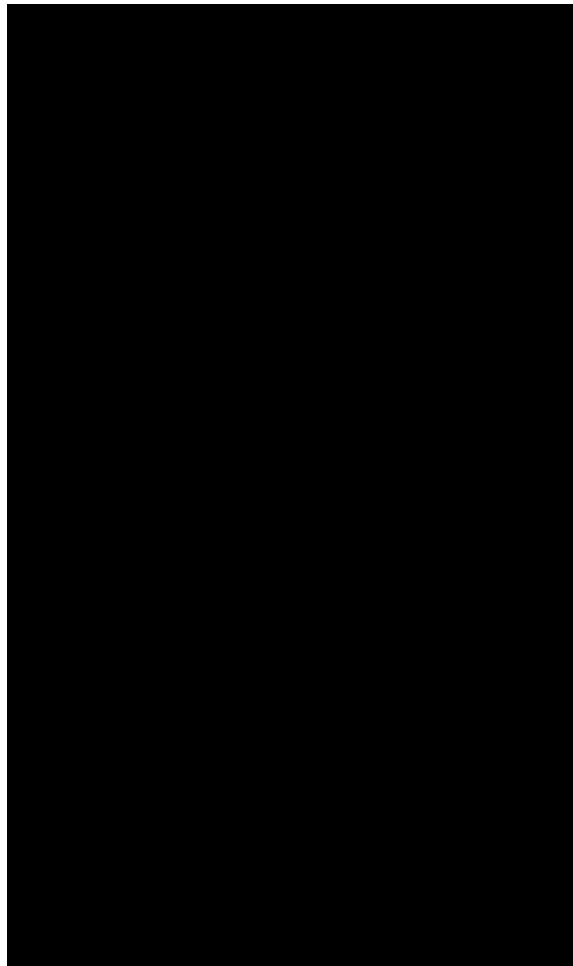
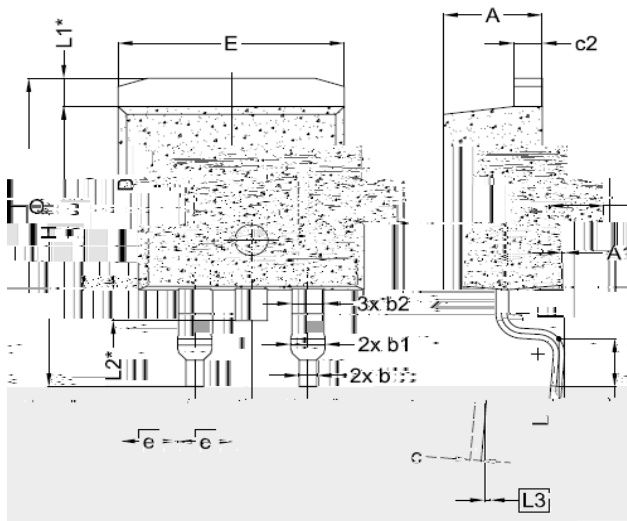


HC!&&\$Z' `YUXg

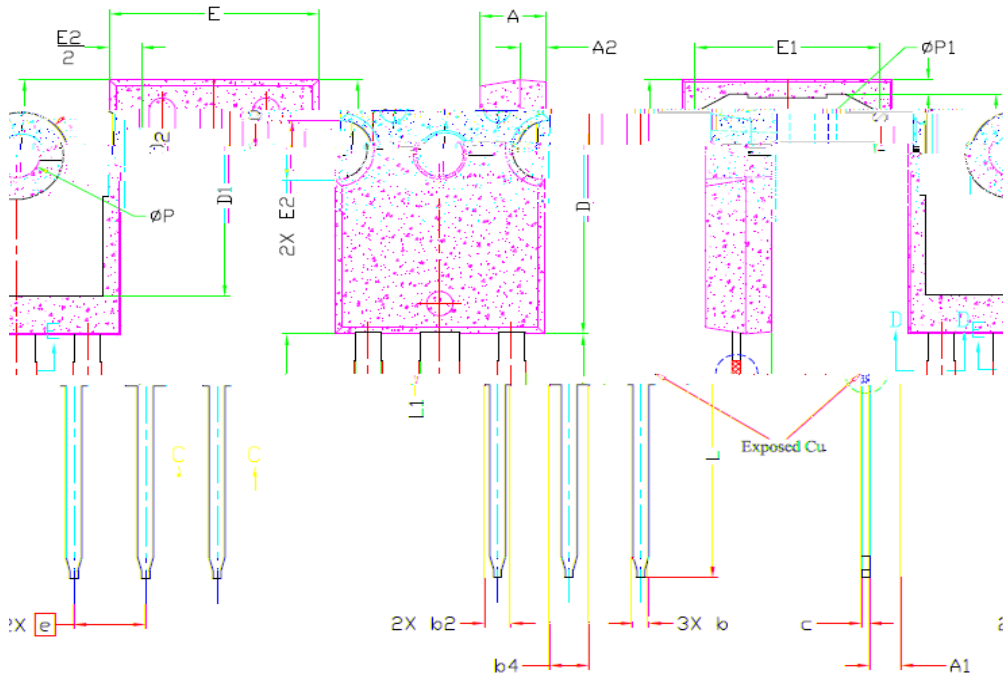


SYMBOL	DIMENSIONS			NOTES
	MIN.	NOM.	MAX.	
A	4,24	4,44	4,64	
A1	1,15	1,27	1,40	
A2	2,30	2,48	2,70	
b	0,70	0,80	0,90	
b1	1,20	1,55	1,75	
b2	1,20	1,45	1,70	
c	0,40	0,50	0,60	
D	14,70	15,37	16,00	4
D1	8,82	8,92	9,02	
D2	12,63	12,73	12,83	5
E	9,96	10,16	10,36	4,5
E1	6,86	7,77	8,89	5
E2	-	-	0,76	6
E3*	8,70REF.			
e	2,54BSC			
e1	5,08BSC			
H1	6,30	6,45	6,60	5,6
L	13,47	13,72	13,97	
L1	3,60	3,80	4,00	
∅P	3,75	3,84	3,93	
Q	2,60	2,80	3,00	
Q1*	1,73REF.			
R*	1,82REF.			

HC!&\* ' ž&`YUXg



HC!&( +ž' `YUXg



SYMBOL	DIMENSIONS			NOTES
	MIN.	NOM.	MAX.	
A	4.83	5.02	5.21	
A1	2.29	2.41	2.55	
A2	1.50	2.00	2.49	
b	1.12	1.20	1.33	
b1	1.12	1.20	1.28	
b2	1.91	2.00	2.39	6
b3	1.91	2.00	2.34	
b4	2.87	3.00	3.22	6, 8
b5	2.87	3.00	3.18	
c	0.55	0.60	0.69	6
c1	0.55	0.60	0.65	
D	20.80	20.95	21.10	4
D1	16.25	16.55	17.65	5
D2	0.51	1.19	1.35	
E	15.75	15.94	16.13	4
E1	13.46	14.02	14.16	5
E2	4.32	4.91	5.49	3
e	5.44BSC			
L	19.81	20.07	20.32	
L1	4.10	4.19	4.40	6
ØP	3.56	3.61	3.65	7
ØP1	7.19REF.			
Q	5.39	5.79	6.20	
S	6.04	6.17	6.30	