



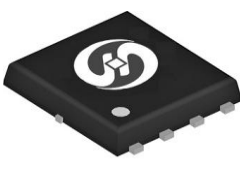
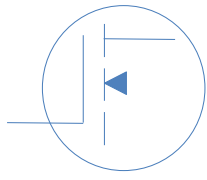
Feature

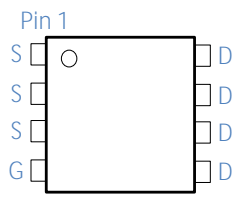
- High Speed Power Switching
- Enhanced Body diode dv/dt capability
- Enhanced Avalanche Ruggedness
- 100% UIS Tested, 100% Rg Tested
- Lead Free, Halogen Free

Application

- Synchronous Rectification in SMPS
- Hard Switching and High Speed Circuit
- DC/DC in Telecoms and Industrial

DFN5*6

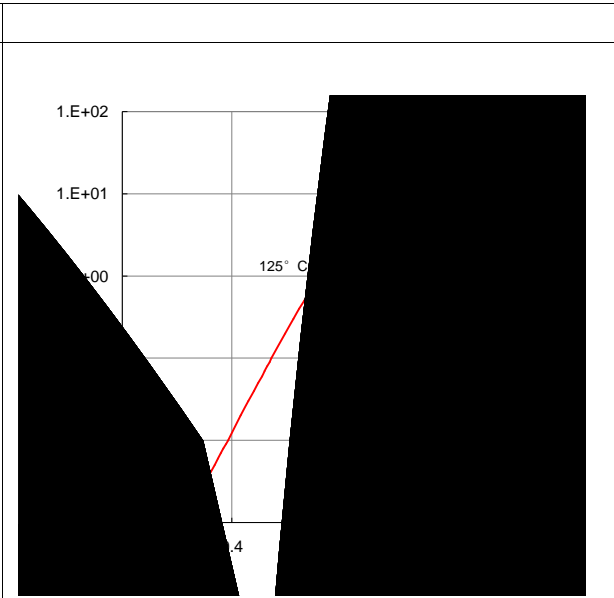
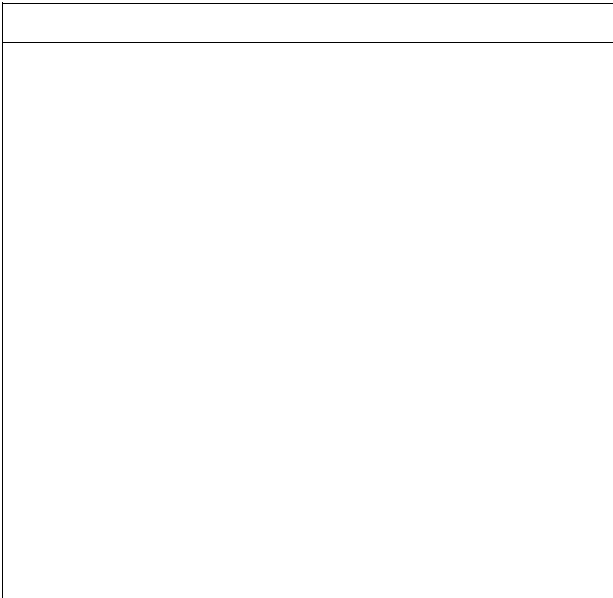
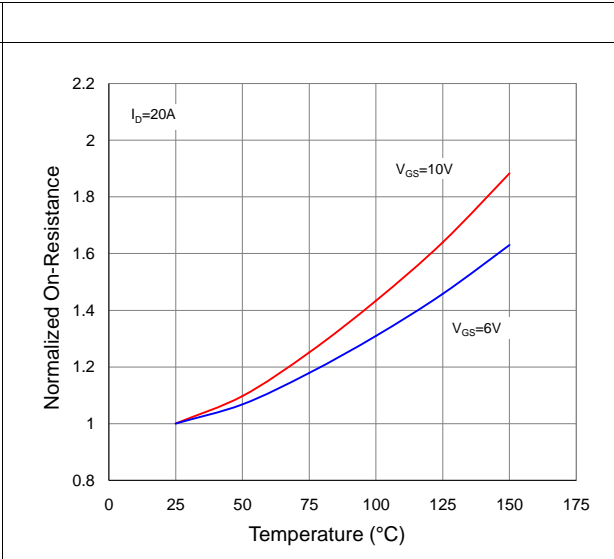
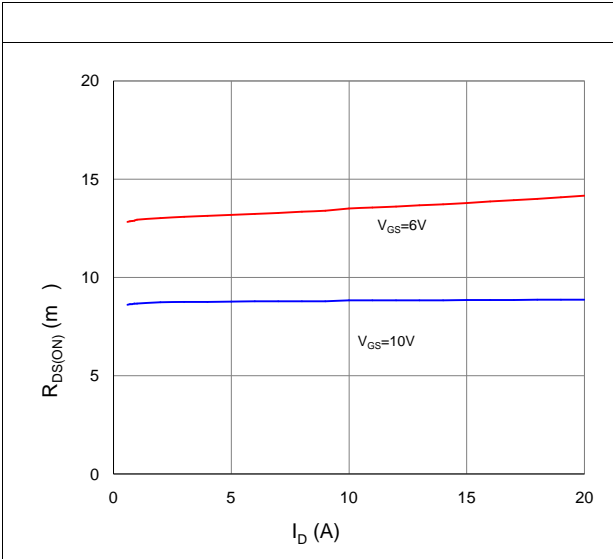
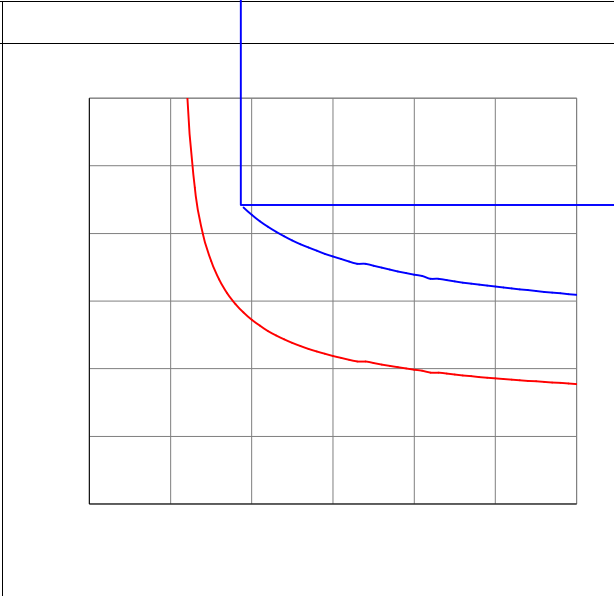


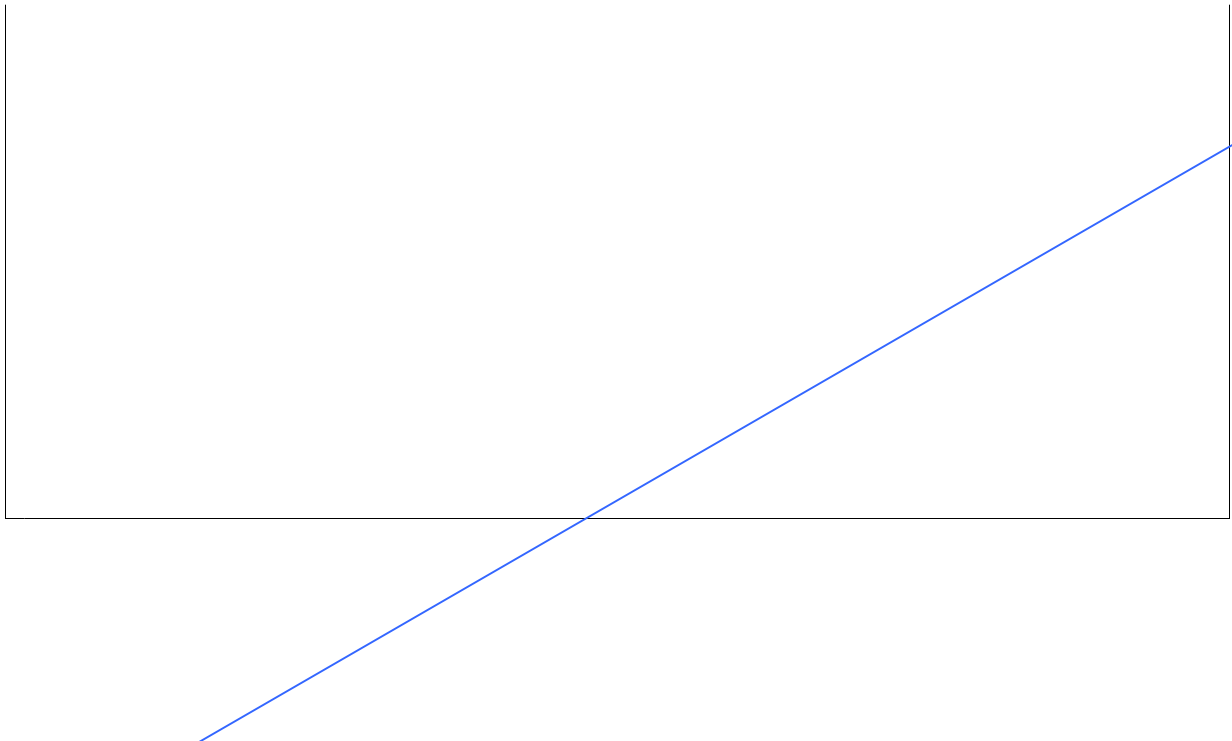
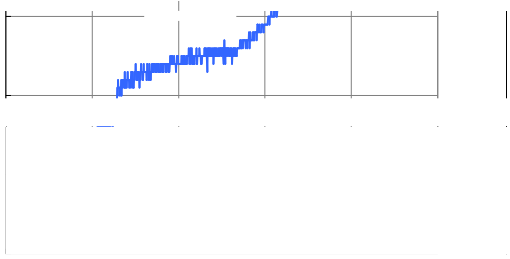


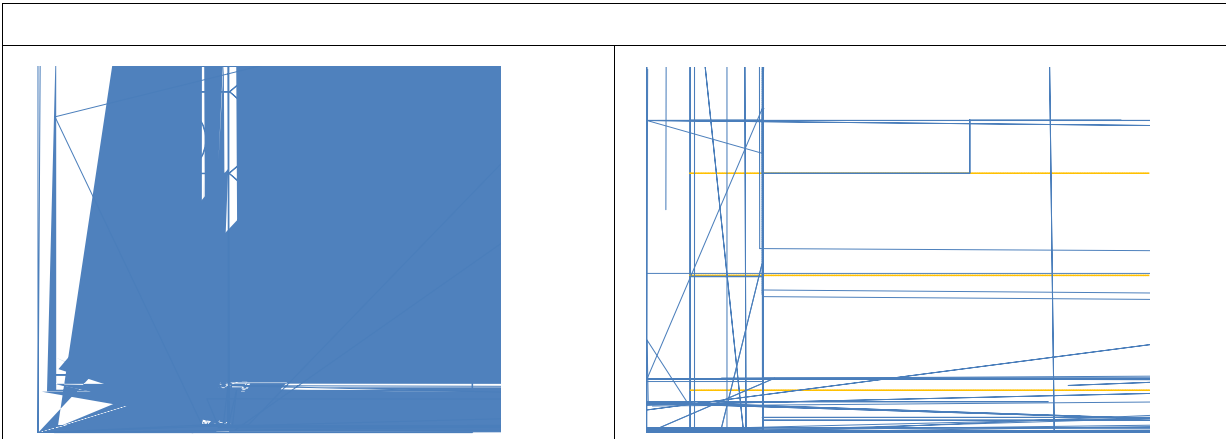
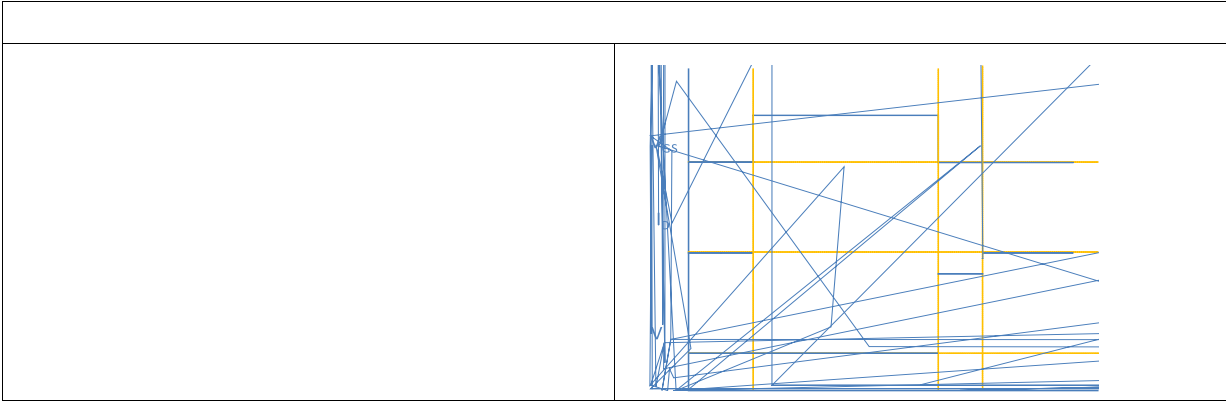
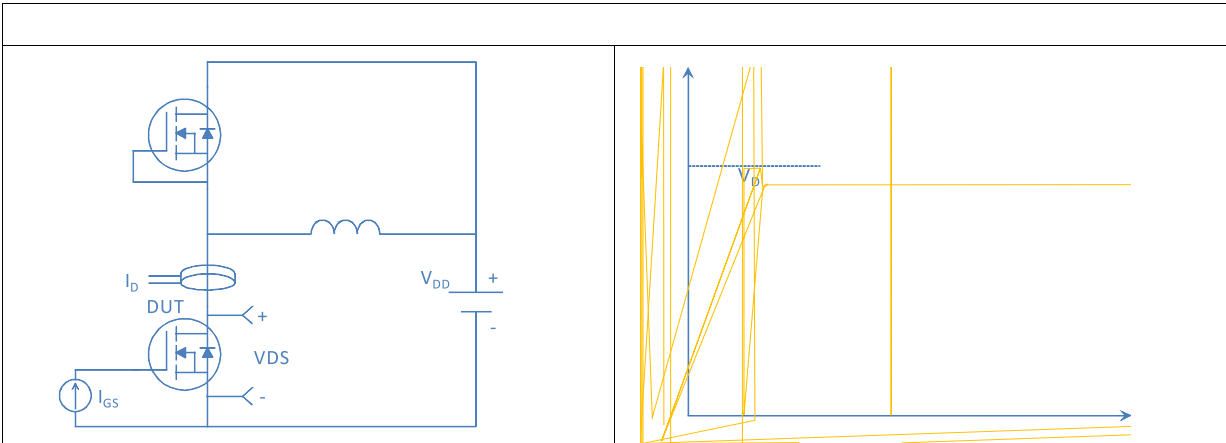
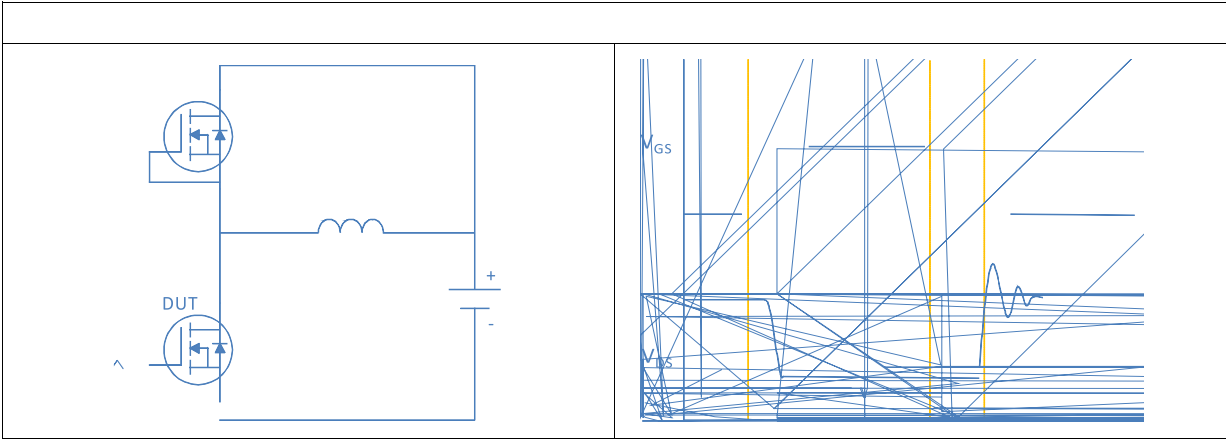
=25°C (unless otherwise specified)

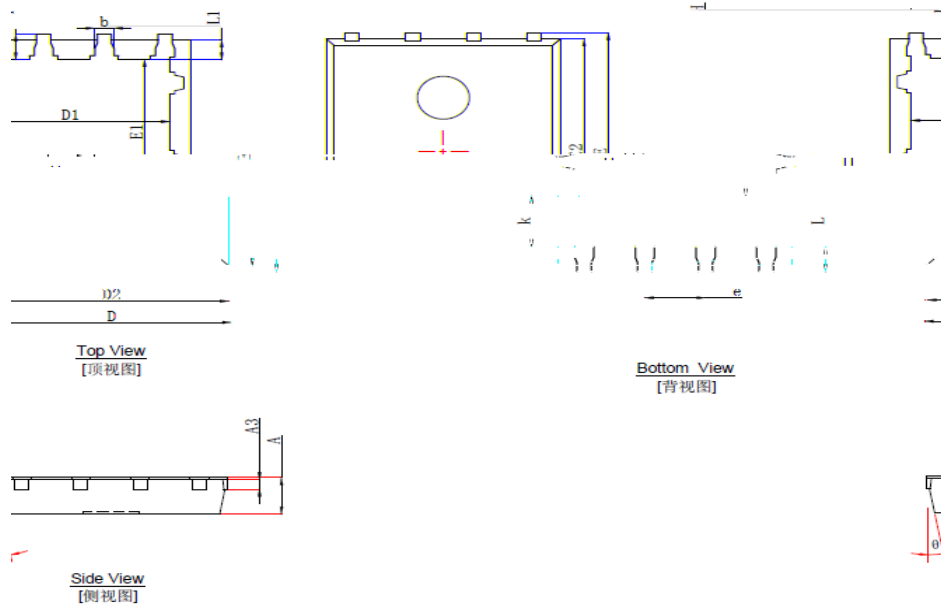
		=25°C		
		=100°C		
		=25°C		
			±	
			=25°C	
		=25°C		
				°C
				°C/W
				°C/W











Symbol	Dimensions In Millimeters		Dimensions In Inches	
